

Welcome to  
Frankfurt North

GLOBAL  
SWITCH





# CONNECT INTO OUR FRANKFURT DATA CENTRE CAMPUS

Global Switch Frankfurt North adds 11,862 sqm of world-class critical Infrastructure to our existing facility and is supported by an additional 14MVA of utility power supply capacity.

Frankfurt is one of the world's most important financial centres and the most important on the European mainland and the gateway to Europe's largest economy. The majority of the major German financial institutions have chosen Frankfurt as their corporate headquarters and, as the city is also well known for its strong telecommunications and energy infrastructure, some of the world's leading companies have made Frankfurt their European headquarters.

As with all Global Switch data centres, Frankfurt North delivers a highly resilient environment providing scalable and flexible solutions supported by numerous connectivity options. It is also designed to meet our best-in-class operational and environmental management processes and operates to Tier III plus standards.

The data centre benefits from diverse power from two separate incoming supplies, offering high density solutions as standard and with flexibility to meet a range of requirements.



A WORLD-CLASS  
DATA CENTRE



OPERATIONAL  
EXCELLENCE



NETWORK  
DENSE



CLOUD  
CONNECTIVITY



CARRIER  
NEUTRAL



BESPOKE  
SOLUTIONS

# JOIN OUR GLOBAL NETWORK

We are the leading large-scale, carrier and cloud-neutral, multi-customer data centre owner and operator across Europe and Asia-Pacific.

Established in 1998, we offer a tailor-made service across our network of hyper scale carrier and cloud neutral data centres. All of our sites deliver secure and resilient solutions with scalable capacity, are strategically located in key international business and connectivity hubs, and operate to Tier III plus standards.



01



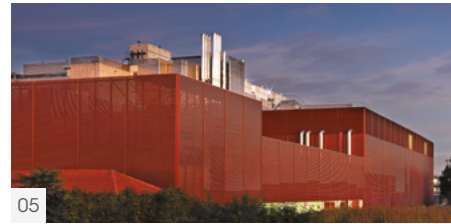
02



03



04



05



06



07



08

## GLOBAL SWITCH AT A GLANCE

- A strong network of world-class data centres
- Low latency locations in Tier 1 markets close to business, communications and internet hubs
- Rich ecosystem supported by the world's leading connectivity and cloud service providers alongside global system integrators and financial services solution specialists
- Economies of scale provide substantial energy efficiencies which result in reduced total occupancy costs
- Unrivalled power with multiple layers of redundancy
- State-of-the-art security and monitoring systems in place 24x7x365
- Industry-leading reliability with comprehensive Critical Environments Programme
- Investment-grade credit ratings received from Fitch, Moody's and Standard & Poor's
- Strong management team with significant industry experience

- 01 FRANKFURT SOUTH
- 02 AMSTERDAM WEST
- 03 LONDON CAMPUS
- 04 MADRID
- 05 PARIS CAMPUS
- 06 HONG KONG
- 07 SINGAPORE TAI SENG
- 08 SINGAPORE WOODLANDS



# IN THE HEART OF FINANCIAL EUROPE

Located close to the financial district, city centre and Frankfurt's international airport, Global Switch Frankfurt North allows our customers to establish or increase their regional presence in the heart of Europe.

Global Switch owns and operates data centres in many of the world's strategic communication and financial hubs which is why we have chosen to build a second facility in Frankfurt.

The presence of the European Central Bank, the German central bank (Bundesbank), branches of foreign central banks and numerous national and international financial institutions underline the city's status as the most important financial centre on the European mainland. Frankfurt is also home to the German stock exchange, Deutsche Börse AG, which ranks as one of the largest in the world alongside New York, London and Tokyo.

Frankfurt hosts one of the busiest transport networks in the world with passengers from over 250 destinations landing in the international airport.

Frankfurt North has direct diverse fibre connections with the existing data centre on the campus, Frankfurt South. Customers are therefore able to plug into an already network dense environment.



## KEY LOCATION FEATURES

- Adjacent to the main Frankfurt and German cable infrastructure for immediate access to the information superhighway
- Multiple diverse connectivity options to connect with Global Switch Frankfurt South which has a well-established presence with multiple carrier and cloud providers as well as German Public IP Exchange DE-CIX
- The data centre is located 5.5km from the financial district and city centre
- A S-Bahn station is located within a 15 minute walk
- Frankfurt International Airport is 15 minutes away by car
- Low latency

# YOUR FUTURE-PROOFED FLEXIBLE DATA CENTRE

Global Switch Frankfurt North has been built to match the latest industry standards in order to meet the evolving requirements of modern business. Every detail has been meticulously designed to ensure the end service delivered meets and exceeds customer expectations.

Benefits to customers include:

**High-density and open-compute design** ensuring that customers can deploy at scale faster, more cost effectively, and efficiently, as well as protect their investment.

**Leading-edge cooling infrastructure**, reducing the Power Usage Effectiveness (PUE) to one of the lowest in the market, independently verified, of 1.2, leading to lower total costs of occupancy for our customers.

**Sophisticated security systems** ranging from thermal perimeter detection to biometric controls with trained staff on-site 24x7x365 minimising risk.

**First-class reception area and meeting rooms** as well as comprehensive building management systems that ensure operations run smoothly and securely.



OPTIMISED COOLING



HIGHLY SECURE



SUSTAINABLE SOLUTIONS





# TRULY FLEXIBLE BY DESIGN

The state-of-the-art technical space can be customised to individual customer needs.

## KEY FEATURES

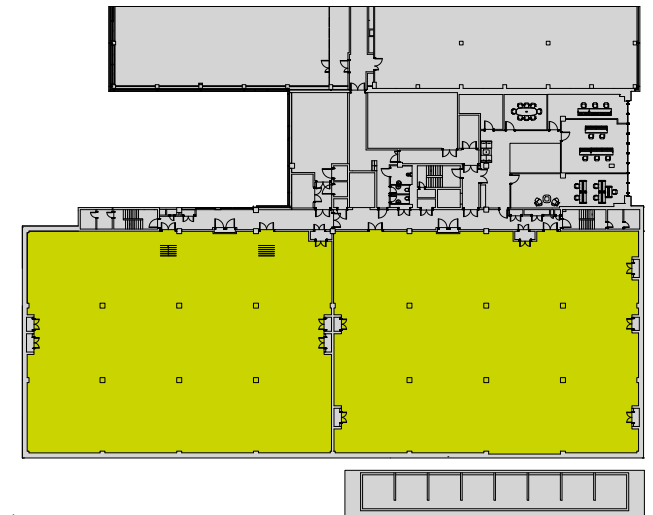
- 11,862 sqm of world-class infrastructure
- 14MVA utility power supply
- High density as standard with flexibility to meet a range of requirements
- Highly efficient power and cooling distribution
- CBRE Romonet has performance validated the facility, proving the data centre can achieve an annualised PUE of 1.11 at full load
- Targeting a BREEAM "Very Good" certification
- Carrier neutral with access to multiple Tier 1 and Tier 2 international carrier networks
- Dedicated security infrastructure systems
- Low risk operational environment
- Cost effective solutions

## Frankfurt North level two

### Customer Space

Offering 2,000 W/m<sup>2</sup> as standard, with higher power density solutions fully supported and data suite size of 1,000 sqm

■ Customer space and power infrastructure



# A NETWORK-DENSE HUB

Global Switch Frankfurt North is able to offer a diverse range of choice when it comes to peering exchanges and carrier networks due to our carrier neutrality. This means customers can directly connect into a wide range of carriers with low latency connections.

Global Switch Frankfurt South is already established as a key connectivity and cloud hub. Now alongside Frankfurt North, the data centre campus provides some of the world's leading brands with access to DE-CIX which is the largest exchange point worldwide in terms of peak traffic. DE-CIX also operates several internet exchanges in Europe, India, the Middle East and North America.

Global Switch data centres are located in key connectivity hubs across Europe and Asia-Pacific

and in close proximity to international fibre routes. Access to multiple ISPs, Tier 1 and Tier 2 carriers is essential to business continuity and increasing network reach.

Direct connections into such a vast range of service providers also gives you the flexibility to diversify your network and connect your data centres as your business needs evolve.

Connect to Europe and the rest of the world with Frankfurt North's thriving ecosystem.

## KEY BENEFITS

- Campus fibre system interconnecting Frankfurt North to Frankfurt South
- Location allows low latency connectivity
- Network dense with access to multiple global and regional carriers and Internet service providers
- Diverse cable routes and pathways
- Access to multiple cloud services
- DE-CIX present
- Two dedicated Meet Me Rooms



### CARRIER NEUTRAL

Our carrier neutral stance allows for greater choice in a competitive environment.



### MULTIPLE PEERING

The presence of DE-CIX and multiple Tier 1 and Tier 2 carrier networks results in direct connections and business continuity.



### NETWORK DENSE

Strategically situated near the main Frankfurt and German cable infrastructure for immediate access to the superhighway.



### LOW LATENCY

Location allows low latency connectivity to Frankfurt's central business district.



## FLEXIBLE SCALABLE SPACE

By understanding our customers' requirements we are able to apply our expertise, flexibility and scalability to meet any challenge.

Our focus is on creating a high quality data centre environment bespoke to your needs. Through the experience we have gained over many years we have developed a wide variety of solutions including some of the most advanced high density solutions of their kind.

### CUTTING-EDGE OPERATIONS

Our international teams share their knowledge to keep Global Switch at the forefront of data centre management.

Global Switch has built a reputation for creating data centres that set new standards in scale, connectivity and resilience. Being able to offer robust and scalable solutions in terms of space, power and cooling has been the driver for many of the leading businesses that choose Global Switch as their European and Asia-Pacific data centre provider.

We operate a centrally-run, industry-leading Critical Environments Programme across all of our global data centres, with dedicated teams in each location. These teams drive a common set of best practice standards, systems, processes and procedures.

Our uncompromising approach to infrastructure, gives you reassurance 24x7x365.



### OUR FRANKFURT NORTH DATA CENTRE SOLUTIONS INCLUDE:



#### PRIVATE SUITES

These self-contained areas, which can include 24x7x365 network operating centre facilities, are designed and built to customers' bespoke specifications and layout requirements.



#### CAGES

Our cages are secure, flexible, private areas offering the benefit of large-scale resilience for medium-sized IT space and power requirements. Customers can specify the design and layout they need.



#### MEET ME ROOMS

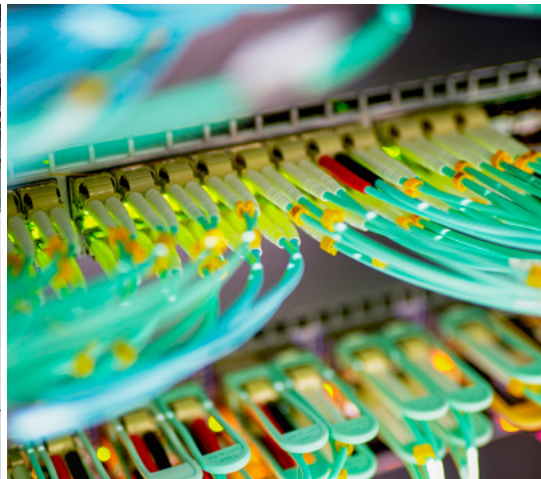
Our diversely routed Meet Me Rooms offer our telecoms, ISP and network providers a highly secure area to establish Points of Presence and offer our customers a wide range of fully resilient connectivity solutions.



#### ADDITIONAL SERVICES

Our range of additional services extends from tailored private offices and meeting rooms through to remote hands, technical cleaning, cable management and secure storage.





## TECHNICAL SPECIFICATION

### Location

- The data centre is located 5.5km from the financial district and city centre
- A S-Bahn station is located within a 15 minute walk
- Frankfurt International Airport is 15 minutes away by car

### Building Overview

- Global Switch owns the freehold
- Purpose-built
- Will exceed Tier III operational performance
- 11,862 sqm of gross space
- 3 data floors
- Flexible IT space with ability to create bespoke environments as required

### Main Structural Features

- Concrete framed with metal-faced cladding
- 5.5m slab to slab height
- Raised floor height of 1,000mm
- Minimum from raised floor: 3.88m floor height to underside of deepest beam
- Floor loading of 15N/m<sup>2</sup>
- 1 goods lift (4 tonnes), 1 passenger lift

### Power

- 10kV utility supply with N+N redundancy
- Utility power supply capacity of 14MVA (Current)
- Technical (IT) Power supplied by on-site Static UPS N+1 redundancy
- Mechanical systems backed up by standby generator system with N+1 redundancy
- Fully diverse power distribution to technical areas
- On-site fuel storage to support 24 hours at full capacity with 24x7x365 fuel delivery
- Offering 2,000W/m<sup>2</sup> as standard, with higher power density solutions fully supported

### Cooling

- 19MW of installed cooling provision
- Minimum N+2 resilience on all systems
- CRAH units control temperature and humidity in technical space within the recommended range of ASHRAE TC9.9
- Diverse distribution pipework throughout
- Chilled water cooling system with free-cooling capability
- In rack cooling capability if required

### Security

- Operations Centre manned 24x7x365
- Security guard patrols 24x7x365
- Continuous CCTV surveillance of external and internal areas

- CCTV records kept for 31 days
- Comprehensive intruder detection and alarms to all areas
- Perimeter Intrusion Detection system (PIDs)
- Strict access control procedures to ISO 27001
- Access control using proximity card readers and biometric systems
- Physical access via mantrap
- Secure managed delivery and loading area available 24x7x365

### Connectivity

- Carrier Neutral
- Network dense with access to multiple global and regional carriers and Internet service providers offering Dark Fibre, Wavelength, Ethernet, MPLS, VPLS, IP Transit, Peering, CDN, Storage, Virtualised Services (SDN), Voice and Mobile Services
- Access to multiple cloud services through leading public, private and hybrid cloud solution providers
- 2 dedicated Meet Me Rooms
- 2 diverse building entry points
- Diverse cable routes and pathways
- Campus fibre system interconnecting Frankfurt North to Frankfurt South
- Roof space availability for satellite and antennae equipment
- DE-CIX present

### Fire Detection and Suppression

- Fully addressable fire detection system in all areas
- Aspirated early warning smoke detection system (monitored 24x7x365)
- Inergen gas suppression system in technical areas

### Critical Environments Management

- Experienced 24x7x365 facilities management team
- Environmental (thermal conditions) monitored 24x7x365
- All Building Management Systems (BMS) monitored 24x7x365
- Comprehensive energy-metering system
- Internationally recognised critical environments programme

### Other Services

- Cross connects
- Customer reports
- Deliveries and storage
- Design and build
- Fit-out
- On-site facilities
- Remote hands
- Technical cleaning
- Waste disposal

Leading the way for the data centre industry, Global Switch is the only choice for resilience, innovation, scalability and agility.

We look forward to welcoming you to our world-class Frankfurt North data centre and becoming your local and worldwide data centre partner.

**Global Switch Frankfurt North**

Eschborner Landstraße 110  
60489 Frankfurt am Main  
Germany

+49 69 74 22 70  
salesfrankfurt@globalswitch.com

The information provided in this brochure is intended to be used for illustrative purposes only and does not constitute part of any offer or offer to contract. This brochure is given with no knowledge of your needs or requirements, and any information herein contained is not warranted as accurate or complete. Global Switch Limited and its consolidated entities accept no liability arising due to your reliance upon the contents of this brochure. © Global Switch 2025



## CONTACTS

### Corporate Office

+44 20 7802 5150

info@globalswitch.com

## DATA CENTRES

### EUROPE

#### Global Switch Amsterdam

+31 20 6666 300

salesamsterdam@globalswitch.com

#### Global Switch Frankfurt

+49 69 74 22 70

salesfrankfurt@globalswitch.com

#### Global Switch London

+44 20 7473 9000

saleslondon@globalswitch.com

#### Global Switch Madrid

+34 91 312 06 00

salesmadrid@globalswitch.com

#### Global Switch Paris

+33 1 55 90 04 60

salesparis@globalswitch.com

### ASIA-PACIFIC

#### Global Switch Hong Kong

+852 3955 1000

saleshongkong@globalswitch.com

#### Global Switch Singapore

+65 6958 1800

salessingapore@globalswitch.com