

Global Switch Amsterdam East

New purpose-built large-scale
hyperconnected data centre





CGI OF GLOBAL SWITCH AMSTERDAM CAMPUS

YOUR FUTURE PROOF DATA CENTRE

Global Switch Amsterdam East will add a further 32,000 sqm of world-class critical infrastructure to our existing facility, Amsterdam West, and will be supported by an additional 40MVA of utility power supply capacity at 50kV.

As with all Global Switch data centres, Amsterdam East will deliver a highly resilient environment providing scalable and flexible solutions in a network dense, carrier and cloud neutral environment. Our world-class infrastructure is designed to meet our best-in-class operational and environmental management processes.

Global Switch Amsterdam East will offer customers rich connectivity, low latency and access to a diverse ecosystem of enterprises and service providers with flexibility to meet a range of requirements.

KEY BENEFITS TO CUSTOMERS INCLUDE:

- **New Facility**
purpose-built high performance data centre
- **IT Power**
supports high power rack loads with average densities between 2,000W/m² and 3,000W/m²
- **Sustainability**
targeting BREEAM Very Good with an annualised PUE of less than 1.2
- **Open Compute Project**
targeting OCP Ready Recognition
- **Hyperconnected**
Carrier rich ecosystem, with direct access to AMS-IX and other major internet exchanges
- **Cooling**
standard flooded room design incorporates fan walls, with flexibility for liquid cooling as required



NETWORK DENSE



SUSTAINABLE



CLOUD CONNECTIVITY



BESPOKE SOLUTIONS



CARRIER NEUTRAL



OPERATIONAL EXCELLENCE

JOIN OUR GLOBAL NETWORK

We are a leading large-scale, carrier and cloud-neutral, multi-customer data centre owner and operator across Europe and Asia-Pacific.

Established in 1998, we offer a tailor-made service across our network of large scale carrier and cloud neutral data centres. All of our sites deliver secure and resilient solutions with scalable capacity, are strategically located in super prime positions in key international business and connectivity hubs, and operate to Tier III plus standards.

GLOBAL SWITCH AT A GLANCE

- A strong network of world-class data centres
- Low latency locations in Tier 1 markets close to business, communications and internet hubs
- Rich ecosystem supported by the world's leading connectivity and cloud service providers alongside global system integrators and financial services solution specialists
- Economies of scale provide substantial energy efficiencies which result in reduced total occupancy costs
- Unrivalled power with multiple layers of redundancy
- State-of-the-art security and monitoring systems in place 24x7x365
- Industry-leading reliability with comprehensive Critical Environments Programme
- Investment-grade credit ratings received from Fitch, Moody's and S&P Global Ratings
- Strong management team with significant industry experience

GLOBAL SWITCH'S WORLD CLASS PORTFOLIO

01 FRANKFURT CAMPUS

02 LONDON CAMPUS

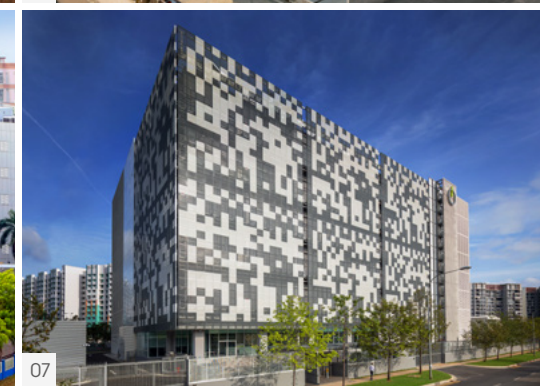
03 MADRID

04 PARIS CAMPUS

05 HONG KONG

06 SINGAPORE TAI SENG

07 SINGAPORE WOODLANDS



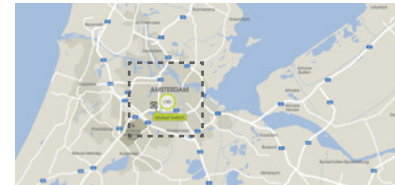


AMSTERDAM, EUROPE'S CONNECTIVITY HUB

Amsterdam East is located immediately adjacent to Global Switch's existing data centre in a prime position in Amsterdam West, close to the city centre and the financial district providing extra low latency solutions to customers.

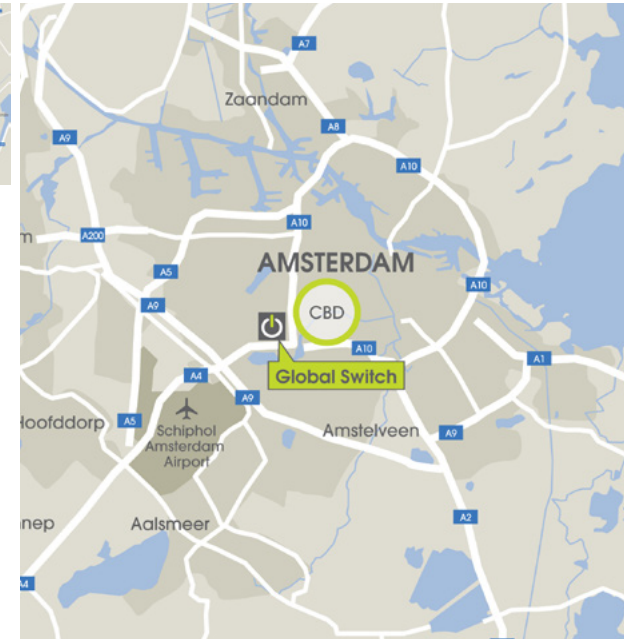
Amsterdam is a key strategic connectivity hub and is home to large hyperscalers and international enterprises. A number of the main transatlantic subsea cables from the US land here and this, together with its central location on the coast of Europe and with its proximity to other key markets such as London, Frankfurt and Paris, have made Amsterdam one of the most important locations for cloud and hosting providers.

The presence of AMS-IX, one of the world's leading internet exchanges, provides Amsterdam with unparalleled connectivity and underlines the city's status as a key interconnection hub and viable location to serve Europe.



KEY LOCATION FEATURES

- Strategically located in the Slotervaart/Overtoomseveld district, adjacent to the main Dutch fibre routes
- Global Switch Amsterdam East is just 2km from the financial district and city centre
- Schiphol International Airport is located within a 10-minute drive
- The Metro station is located directly outside the main gate of Amsterdam East
- Low latency



ENERGY EFFICIENCY AT THE HEART OF ITS DESIGN

Global Switch is focused on providing highly energy efficient facilities and innovative technical solutions to reduce carbon emissions, Amsterdam East will be no exception.

As an integral part of the design, Amsterdam East will feature a 'Chiller Assist' cooling system that will operate for most of the year on free-cooling and so will not require the use of standalone chillers. In addition, this design will also allow the heat that is collected from the process to cool the facility to be exported to the local community for district heating.

OTHER ENERGY EFFICIENT FEATURES:

- High Efficiency UPS with long life lithium batteries
- Variable speed fans and pumps
- LED lighting
- Use of low Greenhouse Warming Potential (GWP) refrigerant gases
- Selection of switchgear that is SF6 free
- Installation of comprehensive metering and monitoring systems to optimise energy performance and reduce energy consumption

KEY ENVIRONMENTAL BENEFITS:

- 100% renewable energy purchased for entire facility
- Targeting BREEAM Very Good rating
- Full load annualised PUE of less than 1.2 (independently validated)
- Certified to ISO 14001 (Environmental Management) and ISO 50001 (Energy Management)
- Work with customers to optimise their IT deployment layout to gain the best energy efficiency from their technical space
- Recycling of waste
- Utilising, where possible, recycled or sustainable materials or components to reduce the total energy used
- Planned new facility entrance space with bicycle storage and changing facilities





32,000 SQ M

over 2 floors with 18 technical suites

CREATE THE DATA CENTRE THAT WORKS FOR YOU

Our high density and open-compute design ensure customers can deploy in multiple MW increments faster, more cost-effectively and efficiently.

Amsterdam East's next-generation layouts will feature separate technical/service corridors, dedicated mechanical and engineering infrastructure. The design can be tailored to your specific needs with a wide range of rack densities available.

Our flexibility and scalability ensure you leverage the solutions that work best for you today and tomorrow. Global Switch's end-to-end service is delivered by one of the most experienced teams in the industry.



BESPOKE PRIVATE SUITES

These self-contained areas are tailored to the needs of each customer offering complete flexibility to design your ideal space.



MEET ME ROOMS

Highly-secure purpose built areas where telecommunications companies can house infrastructure to connect with our diverse ecosystems of businesses.



CAGES

The Global Switch cage solution delivers the benefits of large-scale resilience for medium-sized IT space and power requirements. This solution provides secure private areas for customers and offers flexibility in design and layout.



ADDITIONAL SERVICES

Our range of additional services extends from tailored private offices and meeting rooms through to remote hands, technical cleaning, cable management and secure storage.

CUTTING-EDGE OPERATIONS

Our international teams share their knowledge to keep Global Switch at the forefront of data centre management.

Global Switch has built a reputation for creating data centres that set new standards in scale, connectivity and resilience. Being able to offer robust and scalable solutions in terms of space, power and cooling has been the driver for many of the leading businesses that choose Global Switch as their European and Asia-Pacific data centre provider.

We operate a centrally-run, industry-leading Critical Environments Programme across all of our global data centres, with dedicated teams in each location. These teams drive a common set of best practice standards, systems, processes and procedures.

Our uncompromising approach to infrastructure gives you reassurance 24x7x365.



RESILIENT INFRASTRUCTURE

providing uninterrupted power with multiple layers of redundancy monitored 24x7x365



INNOVATIVE COOLING

reducing the Power Usage Effectiveness (PUE) to one of the lowest on the market



SOPHISTICATED SECURITY

ranging from thermal perimeter detection to biometric controls with trained staff on-site 24x7x365



OPERATIONAL EXCELLENCE

delivering a Critical Environments Programme which is one of the best and most robust in the industry



CONTINUOUS IMPROVEMENT

ensuring best practice through certification to key international standards

SCALE FOR THE DIGITAL DEMANDS OF THE FUTURE

Global Switch Amsterdam East is in close proximity to international fibre routes with access to multiple ISPs and Tier 1 carriers. Customers will benefit from direct access to the already network dense ecosystem of Amsterdam West that is home to many of the world's major cloud service providers.

With access to AMS-IX, one of the largest hubs for internet traffic in the world, Global Switch Amsterdam East's carrier and cloud neutral data centre will be a key interconnection hub and a natural choice for any company or organisation seeking reliable, high-speed connectivity inside the Netherlands and around the globe.

Direct connections can be made to a vast portfolio of leading telecommunications, internet and cloud service companies, including ISPs, major content owners and distributors, web portals and online social media. Together with the presence of major internet exchanges, these organisations have transformed the campus into a network dense ecosystem, giving you the flexibility to scale up and connect instantly, securely and reliably as your business needs evolve.

KEY BENEFITS

- Campus fibre system interconnecting Amsterdam East to Amsterdam West
- A diverse and network dense ecosystem with access to multiple global and regional carriers and Internet service providers
- Direct access to peering platforms AMS-IX, NL-IX, GE-CIX, NetIX Communications and Speed-IX
- Over 75 Tier 1 and Tier 2 carriers
- Access to on-ramp to securely scale into the cloud
- Secure connections to providers and exchanges
- An environment that allows customers to scale seamlessly



MULTIPLE PEERING

The presence of AMS-IX and multiple Tier 1 and Tier 2 carrier networks results in direct connections and business continuity



NEUTRALITY

Our carrier and cloud neutral stance delivers an abundance of choice in a highly competitive environment



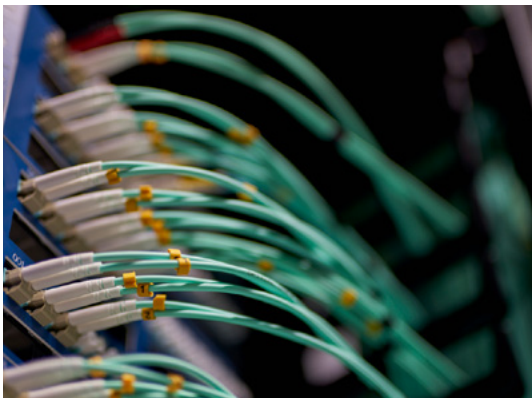
NETWORK DENSE

Strategically situated in the financial district adjacent to the main Dutch fibre routes



LOW LATENCY

Location allows low latency connectivity to Amsterdam's city centre



TECHNICAL SPECIFICATION

Location

- The data centre is located 2km from the financial district and city centre
- A local Metro station is immediately outside the main gate
- Schiphol International Airport is 10 minutes away by car

Building Overview

- Global Switch has a long term ground lease with automatic renewal rights
- Purpose built
- Will exceed Tier III operational performance
- 32,000 sq m of gross space
- 2 data floors
- Flexible IT space with ability to create bespoke environments as required

Main Structural Features

- Structural steel frame with reinforced concrete floors and metal faced cladding
- 6m slab to slab height
- No raised floor
- Minimum from finish floor: 3.9m clear height to underside of deepest beam
- Floor loading of 15kN/m
- 2 goods lifts (4 tonnes)

Power

- 50kV utility supply
- Utility power supply capacity of 40MVA
- Technical (IT) Power supplied by on-site Static UPS N+1 redundancy

- Mechanical systems backed up by standby generators with N+1 redundancy
- Fully diverse power distribution to technical areas
- On-site fuel storage to support 24 hours at full load with 24x7x365 fuel delivery
- Offering 2,000 W/m² as standard, with higher power density solutions fully supported

Cooling

- 35MW of cooling provision
- Minimum N+2 resilience on all systems
- Chiller Assist free-cooling
- Fan wall units control temperature and humidity in technical space within the recommended range of ASHRAE TC9.9
- Diverse distribution pipework throughout

Security

- Operations Centre manned 24x7x365
- Security guard patrols 24x7x365
- Continuous CCTV surveillance of external and internal areas
- CCTV records kept for 31 days
- Comprehensive intruder detection and alarms to all areas
- Perimeter Intrusion Detection system (PIDs)
- Strict access control procedures to ISO 27001
- Access control using proximity card readers and biometric systems
- Physical access via mantrap
- Secure managed delivery and loading area available 24x7x365

Connectivity

- Carrier Neutral
- Network dense with access to multiple global and regional carriers and Internet service providers offering Dark Fibre, Wavelength, Ethernet, MPLS, VPLS, IP Transit, Peering, CDN, Storage, Virtualised Services (SDN), Voice and Mobile Services
- Access to multiple cloud services through leading public, private and hybrid cloud solution providers
- 3 diverse MMRs servicing the campus
- 3 diverse Building Entry Points servicing the campus
- Diverse cable routes and pathways
- Campus fibre system interconnecting Amsterdam East to Amsterdam West
- Roof space availability for satellite and antennae equipment
- AMS-IX, NL-IX, GE-CIX, NetIX Communications and Speed-IX present

Fire Detection and Suppression

- Fully addressable fire detection system in all areas
- Aspirated early warning smoke detection system (monitored 24x7x365)
- Gas suppression system in technical areas

Critical Environments Management

- Experienced 24x7x365 facilities management team
- Environment (thermal conditions) monitored 24x7x365
- All Building Management Systems (BMS) monitored 24x7x365
- Comprehensive energy metering systems
- Internationally recognised critical environments programme

Other Services

- Cross connects
- Customer reports
- Deliveries and storage
- Design and build
- Fit out
- On-site facilities
- Remote hands
- Technical cleaning
- Waste disposal

Certifications

- ISO 9001, 14001, 27001, 45001, 50001
- ISAE 3402
- AMS-IX
- PCI DSS Compliant

Technical specification, which is subject to change, relates to the completion of all stages of Global Switch Amsterdam East

Leading the way for the data centre industry, Global Switch is the only choice for resilience, innovation, scalability and agility.

We look forward to welcoming you to our world-class Amsterdam East data centre and becoming your local and worldwide data centre partner.

Global Switch Amsterdam East

Johan Huizingalaan 759

1066 VH Amsterdam

Netherlands

+31 20 6666 300

salesamsterdam@globalswitch.com

The information provided in this brochure is intended to be used for illustrative purposes only and does not constitute part of any offer or offer to contract. This brochure is given with no knowledge of your needs or requirements, and any information herein contained is not warranted as accurate or complete. Global Switch Limited and its group companies accept no liability arising due to your reliance upon the contents of this brochure. © Global Switch 2025



CGI OF THE ENTRANCE FOR THE NEW GLOBAL SWITCH AMSTERDAM

CONTACTS

Corporate Office

+44 20 8054 9000

info@globalswitch.com

DATA CENTRES

EUROPE

Global Switch Amsterdam

+31 20 6666 300

salesamsterdam@globalswitch.com

Global Switch Frankfurt

+49 69 74 22 70

salesfrankfurt@globalswitch.com

Global Switch London

+44 20 7473 9000

saleslondon@globalswitch.com

Global Switch Madrid

+34 91 312 06 00

salesmadrid@globalswitch.com

Global Switch Paris

+33 1 55 90 04 60

salesparis@globalswitch.com

ASIA-PACIFIC

Global Switch Hong Kong

+852 3955 1000

saleshongkong@globalswitch.com

Global Switch Singapore

+65 6958 1800

salessingapore@globalswitch.com